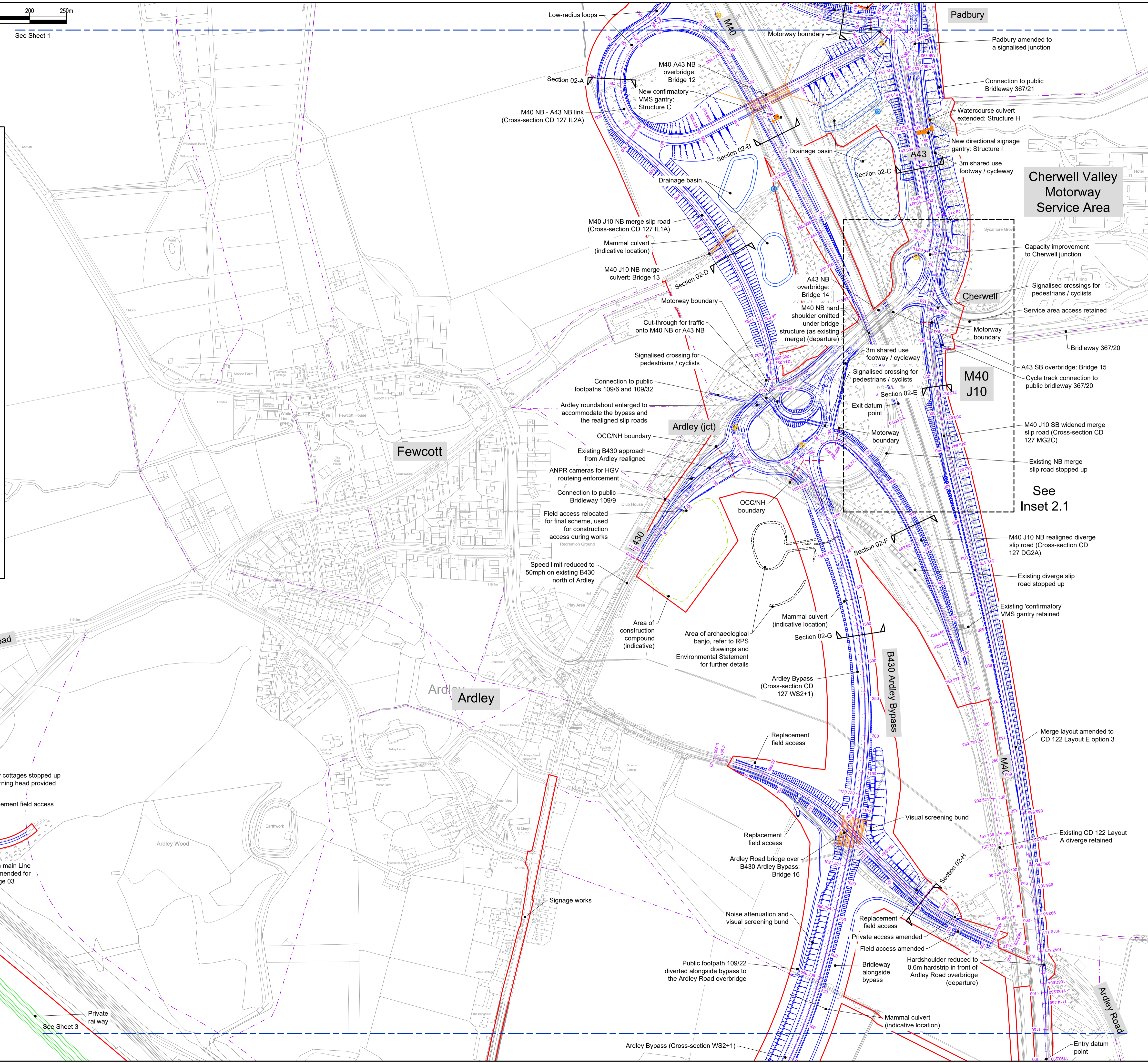
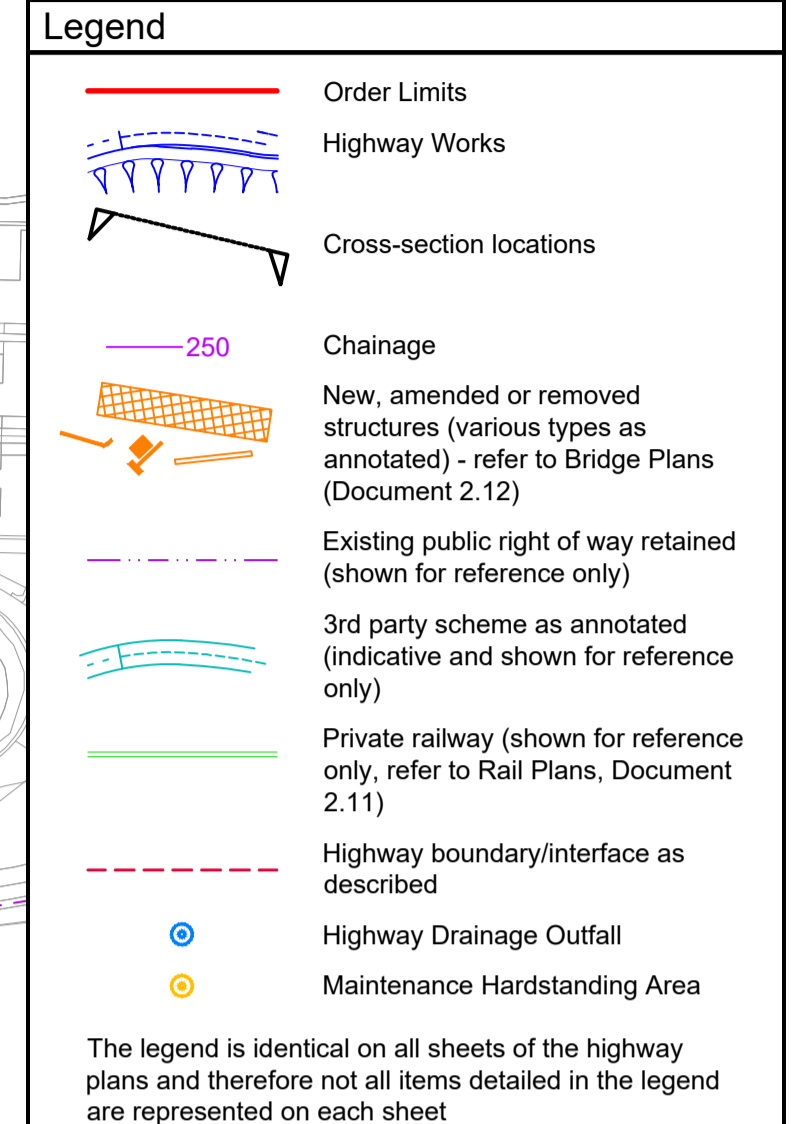


© Crown copyright and database rights 2026 OS AC0000808122. You are not permitted to copy, sub-licence, distribute or sell any of this data to third parties in any form.
© Copyright BWB Consulting Ltd



- ### Notes
- All dimensions in metres unless noted otherwise.
 - The height of proposed bridges, embankments and depths of cuttings are indicative subject to the limits of deviation referred to in the order.
 - All structure positions and sizes shown are indicative only.
 - The proposed works including their specific alignment will be subject to detailed design within the limits of deviation identified on the works plans.
 - Horizontal and vertical deviation of the highway alignments are permitted in accordance with Article 4 of the Development Consent Order.



- ### Highway Works
- By reference to the Works Plans (Document 2.2) and Schedule 1 of the Development Consent Order this plan shows the following Highway Works:
- Work Nos. 14A & 14B (part)
 - Work Nos. 15A & 15B (part)
 - Work No. 18
 - Work No. 19
 - Work No. 20 (part)
 - Work No. 21 (part)
 - Work No. 26
 - Work No. 36 (part)

- ### Highway Plans Cross Sections
- Refer to Documents 2.7F, 2.7G and 2.7H for:
- Sections 02-A, 02-B, 02-C, 02-D, 02-E, 02-F, 02-G & 02-H

- ### Highway Plans Long Sections
- Refer to Documents 2.7O, 2.7P, 2.7Q and 2.7R for:
- A43 NB Padbury
 - M40 NB Diverge
 - M40 NB Merge
 - M40 SB Merge
 - B430 NB
 - Ardley Road
 - Ardley Bypass

- ### Highway Bridge Plans
- Refer to Documents 2.12C, 2.12D, 2.12F and 2.12I for:
- Bridges 12, 13 & 16
 - Structures C & I

Rev	Date	Details of issue / revision	Drw	CRG	APV
P05	27.02.26	DCO Submission	RP	SRH	SRH
P04	02.02.26	Updated following consultation	RP	SRH	SRH
P03	15.09.25	Issued for consultation	SRH	SRH	SRH
P02	01.09.25	General amendments	SB	SRH	SRH
P01	31.07.25	Preliminary Issue	RP	SRH	SRH

Issues & Revisions

Client

THE OXFORDSHIRE STRATEGIC RAIL FREIGHT INTERCHANGE AND HIGHWAYS ORDER 202X

Drawing Title

HIGHWAY PLANS GENERAL ARRANGEMENT SHEET 02

Regulation:	5(2)(o) & 6(2)	Document:	2.7B
Drawn:	R.Picknell	Checked:	S.Hilditch
Approved:	S.Hilditch	Date:	31.07.25
BWB Ref:	NTH2479	Scale@A1:	1:2500
Project - Originator - Functional Breakdown - Spatial Breakdown - Form - Discipline - Number			
OxSRFI-BWB-LSI-02-DR-CH-0102			
Drawing Status	DCO SUBMISSION		Rev
			P05